

BRUNCH

**WALTER
STUDIOS**

CINNAMON ROLL PRETZEL BITES

8

pretzel bites tossed in cinnamon & sugar served w. sweet vanilla icing

WATERMELON

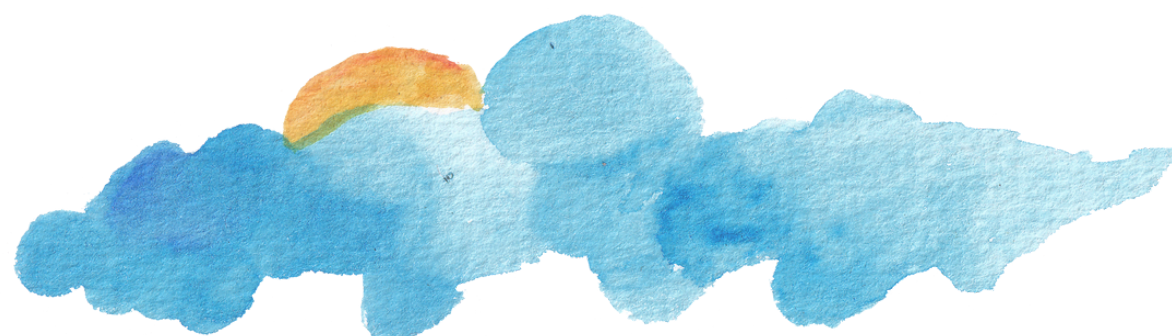
8

half a mini watermelon mixed with Chamoy & Tajin

PINEAPPLE

8

a bowl of fresh pineapple chunks tossed in Chamoy & Tajin



AVOCADO TOAST

12

Noble sourdough w. avocado, cherry tomatoes, radishes, sprouts
• add eggs or bacon +3

WAFFLE & FRESH BERRIES

10

bubble waffle w. fresh berries & candied walnuts

NASHVILLE CHICKEN & WAFFLES

14

bubble waffle & nashville-hot fried chicken breast w. maple syrup drizzle

SWEET POTATO HASH

14

sweet potato tots, two eggs, grilled onions & peppers, pickled jalapenos, hatch chili crema, w/pulled pork or bacon

BREAKFAST BURRITO

12

flour tortilla filled with hashbrowns, 2 eggs, bacon or sausage, roasted peppers, grilled onions, pepper jack, w/ side of salsa & hatch chili crema

ALL AMERICAN BREAKFAST

13

2 eggs, bacon or sausage links, toasted Noble sourdough & hashbrowns

SUBSTITUTE EGG WHITES +3

***VEG OPTION:
SUBSTITUTE ANY PROTEIN
WITH JACKFRUIT***

BRUNCH

**WALTER
STUDIOS**

BETWEEN BREAD

SUNRISE BURGER

14

grass-raised beef w. a fried egg,
lettuce, tomato, choice of cheese
& 141 sauce on a toasted bun

- sub impossible patties or
add bacon +2

BLT

the one you know,
on Noble sourdough

12

BIG RED CHICKEN SANDWICH

13

grilled chicken breast, avocado,
lettuce, tomato & whole grain
chipotle aioli on Noble ciabatta

CAPRESE

12

fresh mozzarella, tomato, pesto,
EVOO & balsamic glaze on Noble
hoagie roll

SERVED WITH SWEET POTATO TOTS OR WAFFLE FRIES
SWAP 'EM FOR A SIDE SALAD +3

FEATURED BRUNCH BEER



BY **W** **WALTER
STATION
BREWERY**

smooth & malty, with bready characteristics then
blasted w. fresh beans from Press Coffee in PHX, AZ

BRUNCH

**WALTER
STUDIOS**

FOR THE VEG HEADS

ROASTED RED PEPPER HUMMUS **10**

silky smooth hummus with deep flavors of roasted red peppers, garlic and fresh, fruity olive oil, served w/ baked rosemary crisps & cucumber slices

BBQ VEG WRAP **12**

flour tortilla w. shredded jackfruit in Carolina Gold Sauce, dill slaw, tomato, red onion, radish & spinach

HOUSE SALAD **12**

mixed greens with tomato, cucumber, red onion, banana pepper, & Feta tossed in our lemon vinaigrette

CAESAR **12**

classic caesar with crisp romaine & shaved parmesan, tossed in our house-made caesar dressing & topped with garlicky croutons

ADD GRILLED CHICKEN +6

BRUNCH

**WALTER
STUDIOS**

SIDES

SWEET POTATO TOTS 5

WAFFLE FRIES 5

BACON OR SAUSAGE 3

HASHBROWN TRIANGLES 3

TOAST, BUTTER & JAM 4

DRINKS

COFFEE

ESPRESSO

LATTE • AMERICANO • MOCHA

HOT TEA

JUICES

SODAS

COCKTAILS

BLOODY MARY 12

vodka, house bloody mary mix

MICHELADA 9

Walter Station Brewery Baja
Girl Blond, house mix

MIMOSA 8

bubbles & juice

BEER-MOSA 8

Walter Station Hefeweizen & OJ

MIMOSA FLIGHT 16

tropical, cassis, creamsicle, walter

SANGRIA PITCHER 20

apricot liquor, lime, lemon,
orange, cherry

WINE 8

HOUSE OFFERINGS

ELEVATED ELIXIRS

YERBA MATE 6

cold brewed mate, peppermint
& honey flavor

MELA WATER 5

hydrating watermelon water with
electrolytes & antioxidants

**ODYSSEY
MUSHROOM ELIXIR** 7

Passion Fruit Orange Guava
or Blackberry Lemon Twist
natural energy + focus from Lion's Mane &
Cordyceps mushrooms

**ATHLETIC BREWING CO.
UPSIDE DAWN** 5

Golden style non-alcoholic beer

**ATHLETIC BREWING CO
RUNNING WILD** 5

IPA style non alcoholic beer

BEVERAGE BASICS

PEPSI PRODUCTS 3

**HIBISCUS
LEMONADE** 6

one complimentary refill

ICED TEA 4

green or black

**DE LA
CALLE TEPACHE** 5

mango chili or rotating flavor

RED BULL 5

regular & sugar free

BOTTLED WATER 4

BREWS

W WALTERSTATIONBREWERY

DRAFT

GRAB A FLIGHT 10
your choice of 4 (5oz) tasters!

HAZING ARIZONA 7
Hazy IPA 6.7%
brewed with select malts & hops for a smooth and juicy citrus experience

BAJA GIRL BLOND 7
American Blonde Ale 5.6%
light, crisp and refreshing with slight bready and toasty notes - a great all-around beer for any occasion

JUST BE NICE 7
American Amber 5.2%
a true malt-forward presence, a touch of sweetness, and hints of caramel and roasted coffee

COFFEE & CREAM NITRO 7
Cream Ale 5.1%
smooth & malty, with coffee

STUDIO SESSION LIGHT ALE 7

Blonde Ale 4.8%
ultra-light bodied pale ale that's smooth, crisp and refreshing for an ultra-easy drinking experience

WSB HEFEWEIZEN 7
Hefeweizen 5.7%
our take on a classic hefeweizen, this brew has the banana & clove notes you expect with a beautiful unfiltered body

TURNOUT 7
West Coast IPA 6.5%
citrus-forward west coast IPA busting out with flavor & a crisp, bitter finish

STRAWBERRY WATERMELON SOUR 7
Wheat Gose 5%

MARZEN WALTBERFEST 7
Marzen Style 5.5%
Our take on a traditional Marzen style beer, rich in malt and medium-bodied with a slightly dry finish

CANNED

WALTER STATION BREWERY 7 (16oz)

COFFEE & CREAM
Cream Ale 5.1%
smooth & malty, with bready characteristics then blasted w. fresh beans

TURNOUT
West Coast IPA 6.5%
citrus forward IPA busting out with flavor & a crisp + bitter finish

JUST BE NICE
American Amber 5.2%
a true malt-forward presence, hints of caramel and roasted coffee

ROTATING CANS
ask about our current offerings!

OTHER

BLAKE'S TRIPLE BERRY JAM 6
Fruit Cider 6.5%
flavors of strawberry, blackberry and raspberry

HOLIDAILY FAVORITE BLONDE 6
Blonde Ale 5% | GF
malty sweetness & light hop finish

HOLIDAILY BIG HENRY 6
Hazy IPA 6.3% | GF
a blend of bright, fruity & intricate hops

MODELO ESPECIAL 6
Mexican Lager 4.4%
a bright, light-bodied Mexican-style lager with notes of sweet corn and crisp citrus

NÜTRL VODKA SELTZER 7
pineapple, black cherry, watermelon